

IMSA Attach to AIRIMSA Wireless Network

Installation instructions for Windows OS

Note: This task is to be completed while you are at the IMSA main campus in Aurora, IL

Table of Contents

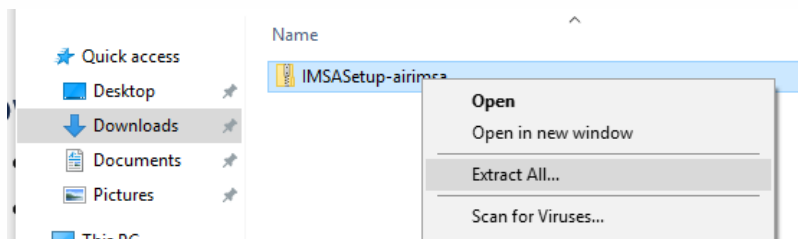
<i>Downloading the installation file</i>	1
<i>Configure computer for airimsa wireless network</i>	1
<i>Connecting to the airimsa wireless network</i>	3

Downloading the installation file

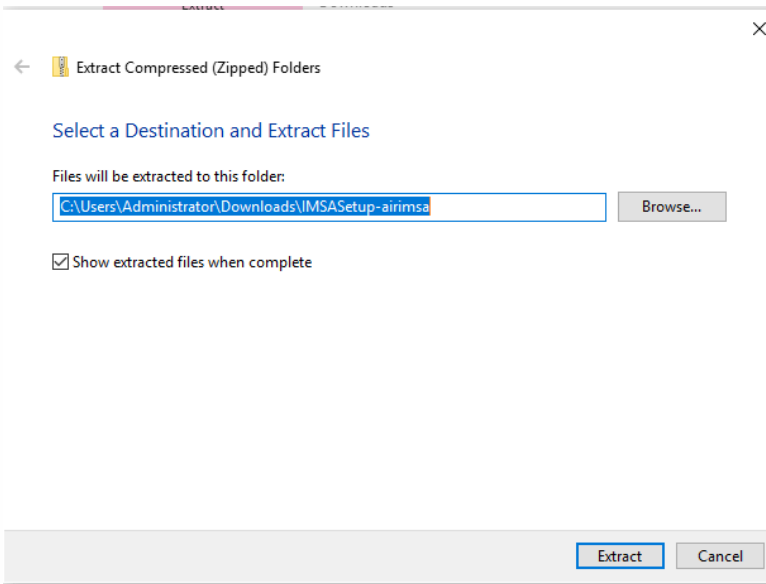
1. Go to <https://sites.imsa.edu/scs>
2. Click on the download link for the Installation/Setup for Windows OS
3. Download the file to your Downloads folder on your Windows computer

Configure computer for airimsa wireless network

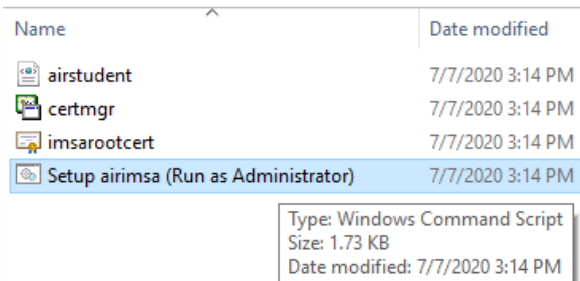
1. Go to your downloads folder and open it so you can see the contents
2. Find and right-click on the downloaded file and select Extract All from the pop-up menu



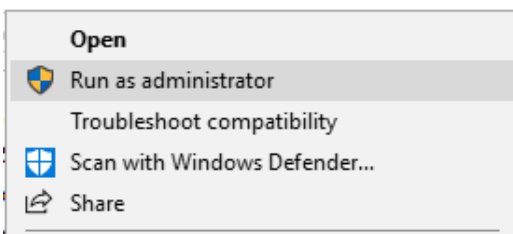
3. Click Extract to accept the default extract location. Note the location, as you will need it in the next step.



4. Navigate to the location noted above and double-click on the directory/folder to open it.
 - a. A windows may automatically open to this location, depending on your Windows OS configuration.
5. Double-click on the folder called IMSASetup-airimsa
6. Find and Right-Click on Setup airimsa (Run as Administrator) or Setup airimsa (Run as Administrator).cmd.



7. Select Run as Administrator from the pop-up menu that appears



8. You will see a User Account Control prompt, select Yes to allow the configuration script to run
9. Allow the configuration script to finish and they press any key on the keyboard to close the command prompt window

```
Administrator: IMSA WiFi Configuration
Setup connection to IMSA airimsa WiFi Network
Checking for Administrative Privileges
Success!
Installing IMSA Wireless Authentication Certificate dated 02-2020
Installing IMSA Wireless Profile - airimsa
Completed
Press any key to continue . . .
```

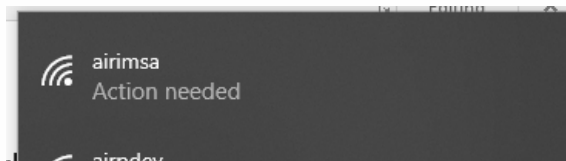
10. Configuration Completed

Connecting to the airimsa wireless network

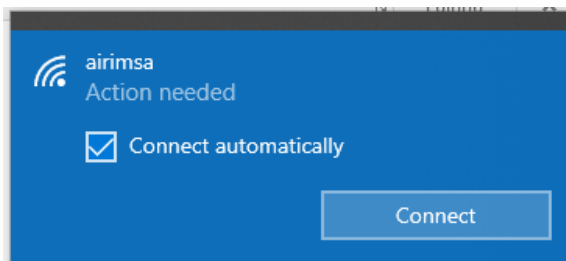
1. Click on the wireless icon in the lower right hand corner of your screen. On some version of Windows this may also look like a globe.



2. If your wireless card is enabled you should see a list of available wireless networks. Find and click on **airimsa**.



3. Click the Connect button



4. You will be prompted for your IMSA username and password

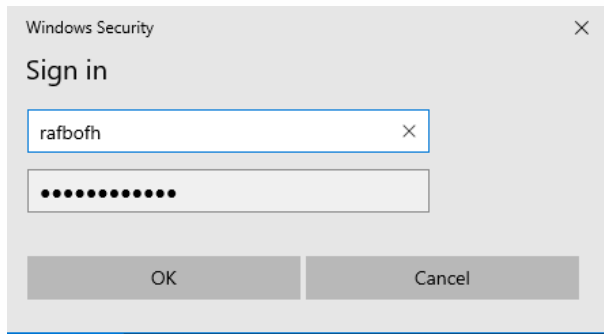
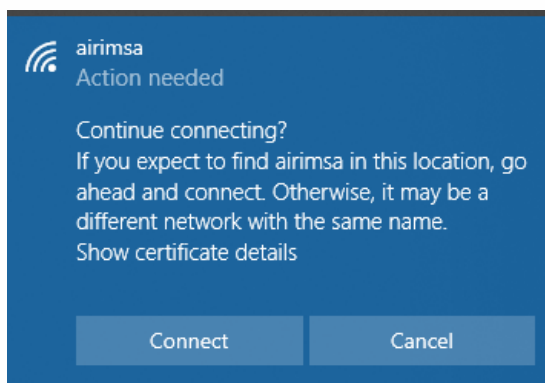
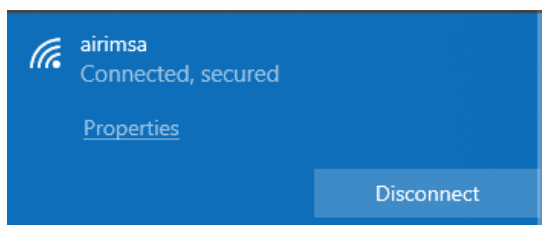


Figure 1-Example Only

5. You may see a warning concerning connecting to airimsa, click Connect



6. After a few seconds, you should see a confirmation that you are connected to airimsa



7. Task Completed