

IMSA Attach to IMSA Printers

Installation instructions for Windows OS

Note: This task is to be completed while you are at the IMSA Main Campus in Aurora, IL

Table of Contents

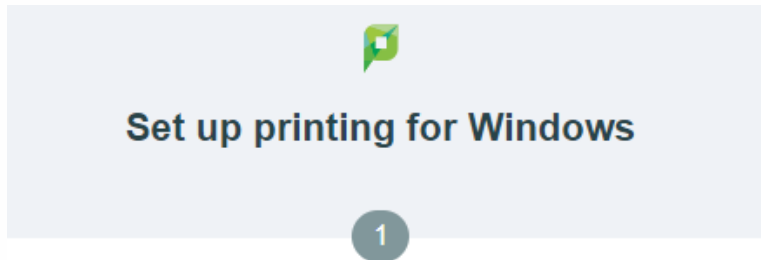
Downloading the proper client installation file..... 1

Installing PaperCut Mobility Printing Client..... 2

Checking the installation of the IMSA printers..... 5

Downloading the proper client installation file

1. Go to <http://143.195.1.2:9163/setup>
2. Click on the download link for Windows OS



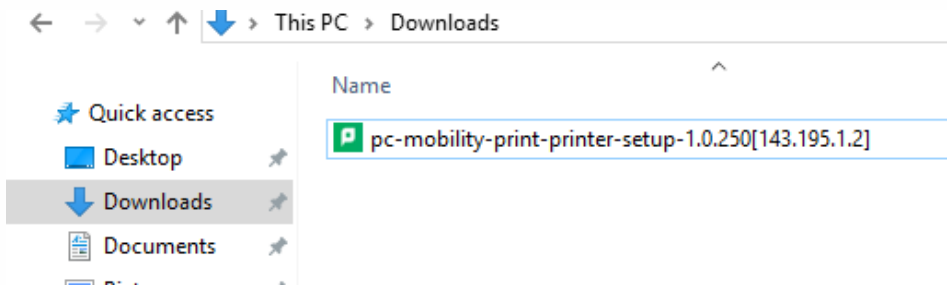
Click the button below to download Mobility Print



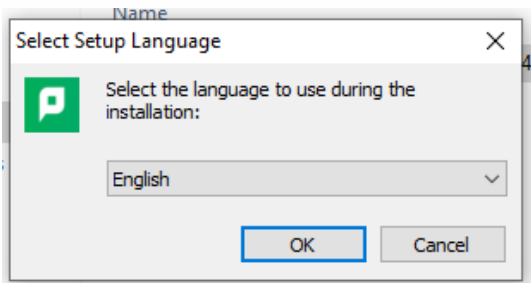
3. Download the file to your Downloads folder on your Windows computer

Installing PaperCut Mobility Printing Client

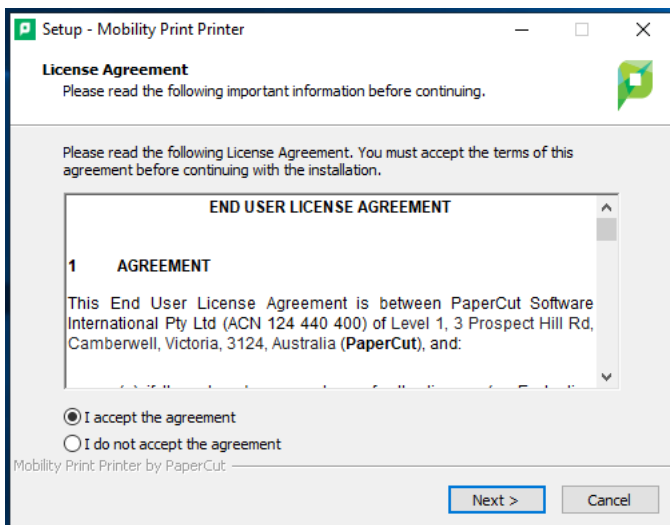
1. Go to your downloads folder and open it so you can see the contents



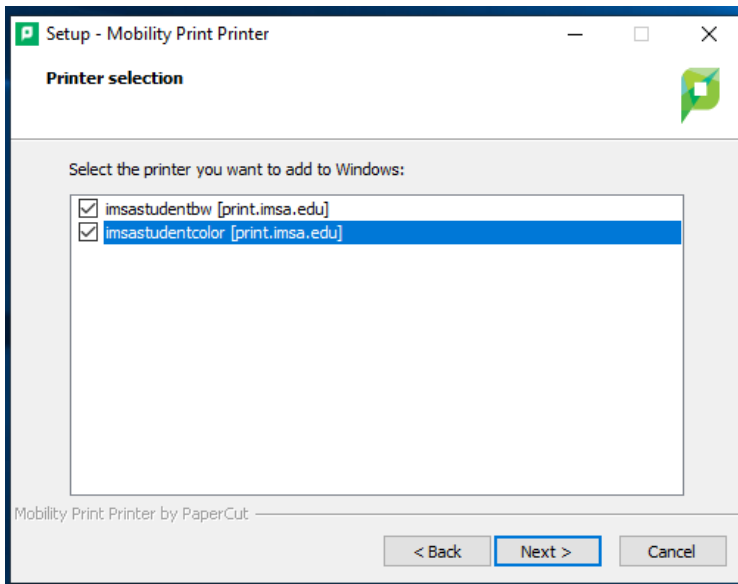
2. Double-click on the file called pc-mobility-print-printer-setup-1.0.250[143.195.1.2]
3. You will see a User Account Management screen pop-up asking you to confirm the launching of the installation program. Click Yes
4. Click OK to accept the installation language



5. Click "I accept the agreement" and then click Next



6. Place a check mark next to both printers and click Next



7. Enter your IMSA username and password and click Next.

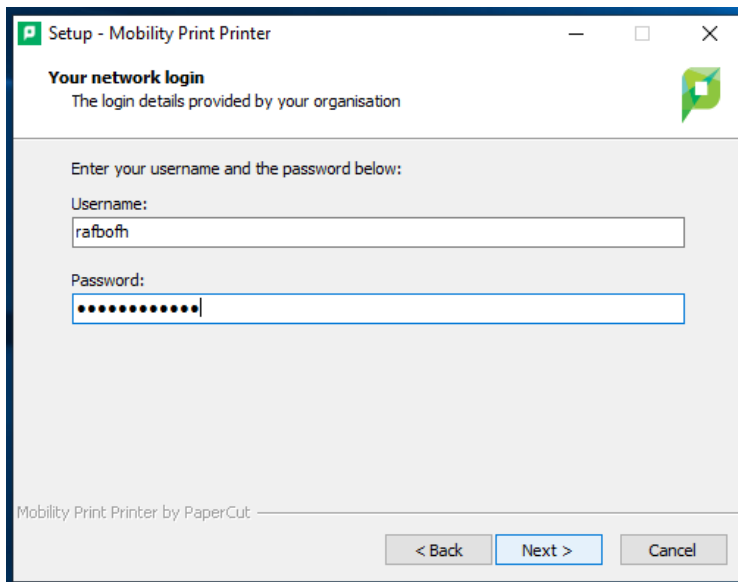
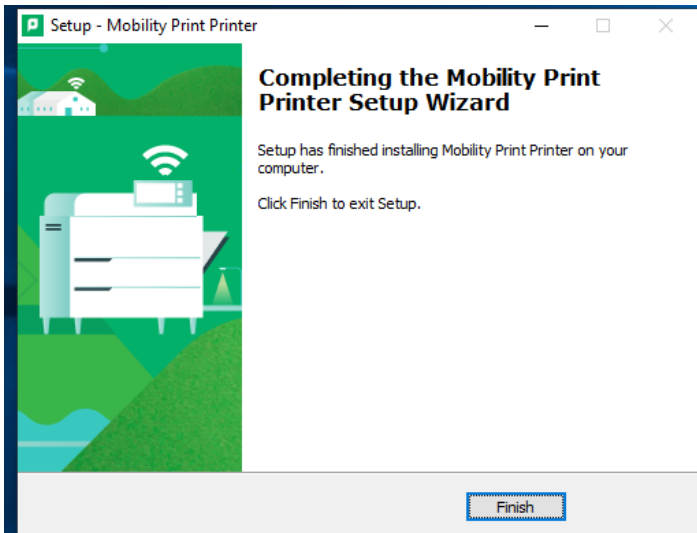


Figure 1-Example Only

8. The installation application will complete the setup of the printers and display the follow screen. Click Finish



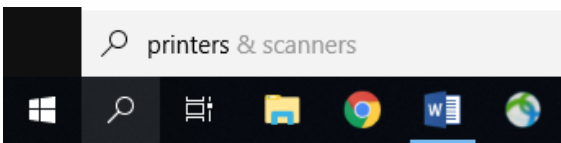
Checking the installation of the IMSA printers

Recommend Tasks

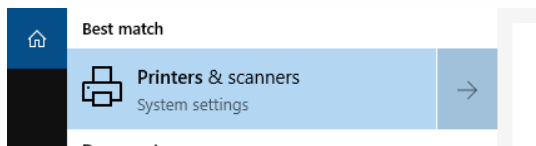
1. Click on magnifying glass icon in the task bar



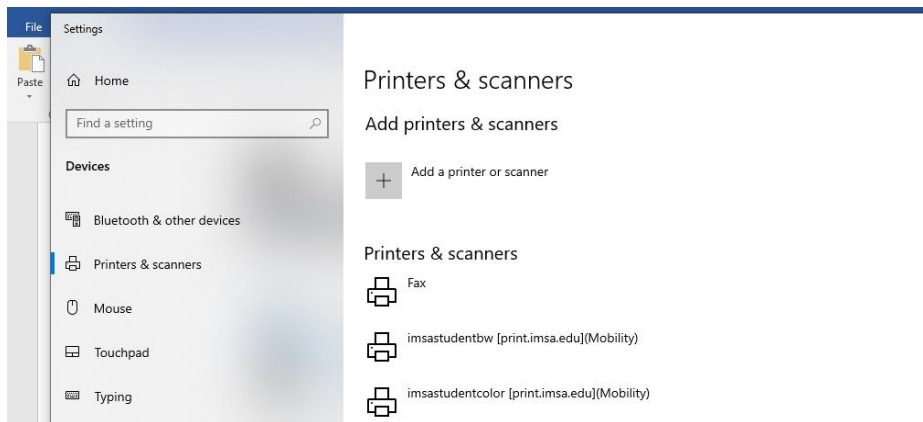
2. Type Printers



3. Click on the Printers and Scanners that appears in the search results



4. You should see two IMSA printers installed
 - a. Imsastudentbw – for Black/White Printers
 - b. Imsastudentcolor – for Color Printers



5. If you don't see the printers, something went wrong with the installation, see a member of the Student Computing Support (SCS) Team or IT HelpDesk staff to troubleshoot the problem.
 - a. **REMINDER: You must be on campus and connected to a wired Ethernet connection in your Res Hall room or connected to the WiFi network "airimsa".**