

IMSA Verner Logger Pro Client

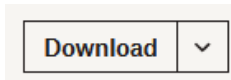
for Windows OS

Table of Contents

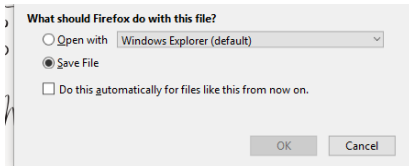
<i>Downloading the installation file(s)</i>	<i>1</i>
<i>Extract the installation files</i>	<i>1</i>
<i>Installing IMSA Verner Logger Pro Client.....</i>	<i>2</i>

Downloading the installation file(s)

- Go to <https://sites.imsa.edu/scs>
- Click on the download link for the Installation/Setup for Windows OS
- Click the Dropbox download button



- Make sure Save File is select and click OK



- Click Save to download the file to your Downloads folder on your Windows computer

Extract the installation files

- Go to your downloads folder and open it so you can see the contents
- Find and right-click on the downloaded file (Install-LoggerPro.zip) and select Extract All from the pop-up menu

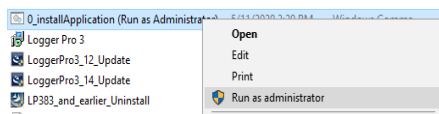


- Click Extract to accept the default extract location. Note the location, as you will need it in the next step.

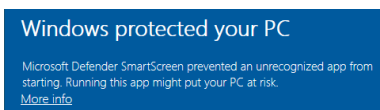


Installing IMSA Verner Logger Pro Client

- Navigate to the location noted above and double-click on the directory/folder to open it.
 - A windows may automatically open to this location, depending on your Windows OS configuration.
- Double-click on the Install-LoggerPro folder
- Launch the installer, **installApplication (Run as Administrator).cmd**. Right-click and select Run as Administrator.
- Click Yes when prompted to confirm running the installer.



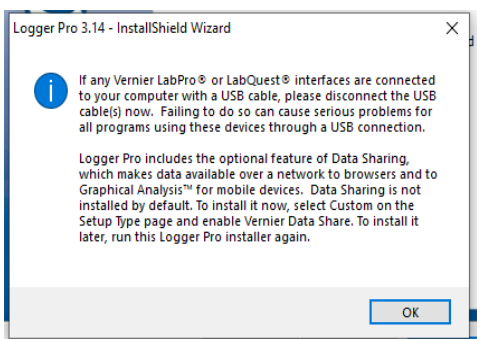
- You will see a Windows protected your PC prompt. Click on the More Info Link



- Click the Run anyway button



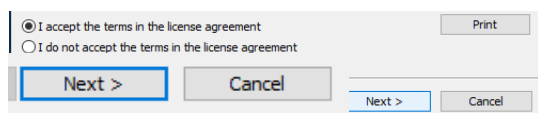
- You will see a User Account Control prompt, select Yes to allow the configuration script to run
- The installer will run in the back ground for a few seconds.



- The installer will display the following screen, click OK to continue
- Click Next

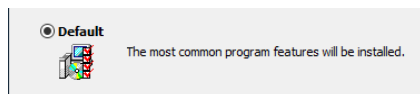


- Accept the license agreement and click Next



- Confirm the software installation location, click Next

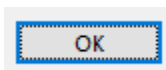
- Select Default installation and click Next



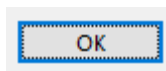
- Confirm installation choices by clicking Install



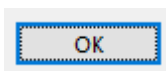
- You may see a prompt for the installation of Microsoft Visual C++ 2015 Redistribution Package appears to have failed, click Yes
- During the installation you may see warnings displayed concerning the installation of specific drivers. This is normal since you are not physically connected to the specific equipment. There is nothing to worry about, click OK so the installation process can continue. Screen shots of warnings are below:
- LabPro WINUSB, Click OK



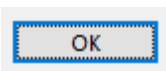
- LabQuest WinUSB, Click OK



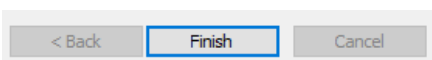
- LabQuest Mini WinUSB, Click OK



- LabQuest Stream WinUSB, Click OK



- Click Finish to complete the installation



- Installation Completed