

## Accessing IMSA's Student Server

**Note: This may be required to complete in-class or out of class educational tasks. You must be on campus to access the IMSA Student Server and have your computer registered and connected to airIMSA or the wired network connection in your Residential Hall room.**

### Table of Contents

<i>Purpose:</i> .....	1
<i>Directories:</i> .....	1
<i>For Apple/Macintosh OS:</i> .....	2
<i>For Linux OS</i> .....	3
<i>For Windows OS</i> .....	4

### Purpose:

Before you can connect to the IMSA Student Server you must be on campus and already have registered your computer with Information Technology services and be connected to either the wireless network "airIMSA" or an Ethernet (wired) connection in your Residential Hall room. A connection to the wireless network "IMSApublic" will not work.

### Directories:

All students have multiple directories or folders, shared areas they may access during their IMSA careers. Below is a summary of the most commonly used directories, folders, shared areas;

- **Home Directory:** Once connected to the IMSA student server, this directory will be called or named the same as the student IMSA account name. If the student's IMSA account or username is rflickinger, than the directory will be named the same.
- **Personal WebPage:** This is a special directory that is used during some Computer Science courses. Once a web page project is copied to this directory, then web page maybe view by anyone who knows the proper web address or URL. In our example with the home directory above, username rflickinger. The web page URL would be **students.imsa.edu/~rflickinger**
- **public directory:** This is also a special directory that faculty may use to share data, files, forms, etc... with students.

You may be instructed to use others, depending on the courses you attend.

## For Apple/Macintosh OS:

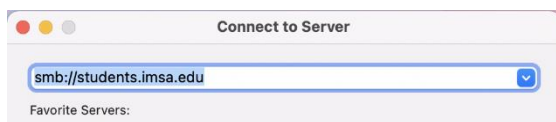
- Make sure you are connected either to the Ethernet/wired connection in your Residential Hall or to the airIMSA wireless network. A connection to the IMSApublic wireless network will not work.
- Open Finder
- Click on Go in the menu bar

Go

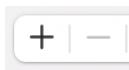
- Click on Connect to Server... or press Command-K

Connect to Server...

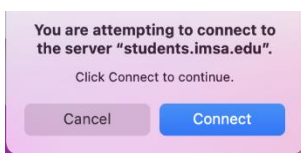
- In the server address field type:
  - **smb://students.imsa.edu**



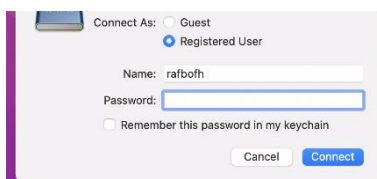
- Press <enter> or click Connect
  - NOTE: If you will be access a server a lot, we recommend adding it to your Favorite Service list by clicking the “+” plus button



- Click Connect to confirm you wish to connect to the server

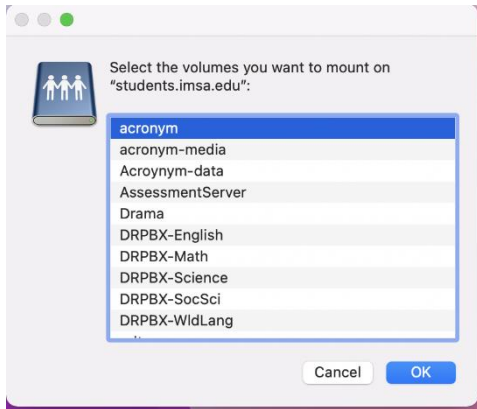


- Make sure Registered Users is select and enter your IMSA account username and password
  - OPTIONAL: Click the check box next to Remember this password in my keychain



- Click Connect

- A new window will open showing all of the possible shared area available via the student file server, find the one you need, click on it and click OK.



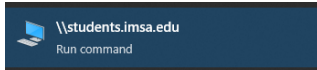
- A new window will open, showing you the contents of the shared area you selected.

## For Linux OS

Instructions not available

## For Windows OS

- Make sure you are connected either to the Ethernet/wired connection in your Residential Hall or to the airIMSA wireless network. A connection to the IMSApublic wireless network will not work.
- In the search box or Cortana window type “\\students.imsa.edu”. The Windows OS will indicate this as a Run Command. Click on the option displayed



- A new window will be displayed showing all of the shared directories/folders available on the IMSA Student Server. One of these folders will be your IMSA account username. This is an area on the IMSA Student Server where you can store files. Other folders will be pointed out to you as your IMSA career

